



EXCLUSIVE 76' UNIQUE ONE OFF !

Mahal Ko is a « one off custom » catamaran, designed by Gilles Ollier, quite famous for his 82' MAGIC CAT. Built in les Sables d'Olonne in 2009 in the high tech shipyard J.Composites, she belongs to the same owner and she has just completed an entire refit in the UK for complying to the highest standards.

This is the perfect combination of performance and leisure cruising, short handed boat operation with hydraulic controls and blue water sailing capability. Comfortable and sea worthy, Mahal Ko will fulfill your sailing aspirations, offering stability and safety. Compare to some similar range units, she is quite light for her size ; Mahal Ko slides over the waves with ease, achieving a comfortable motion and interesting sailing speeds.

Elegant, with clean lines and a minimalist style, Mahal Ko has spacious living areas to socialise with family and friends, with 5 cabins and will offer an incredible exterior lounging space with the different areas dispatched : cockpit, flying bridge, transoms, fore deck ...

General characteristics :

Length	23.42m
Beam	10.50m
Draft (centreboards Up / Down)	1.50m / 3.90m
Displacement (light / loaded)	40 T / 46 T
Head room	34,50m (antenna removed)
Sails Area	312 sq m up-wind 589 sq m downwind
Number of Cabins	5
Number of Berths	10
Surface area	244 sqm
Designer	Gilles Ollier
Year of Build	2009 (full refit 2021/2022)
Builder	Yard SARL VIP Composite (France)
Design Category	A and EC certified CE 0607
Registry	Cayman Islands Registration Official Number 749417

Build Description :

Basic Structure

Superstructure in GRP Foam

Sandwich with carbon reinforcement in front beam and in other high load areas.

Vinylester resin. Gelcoat finish, Vinyl Wrap topsides.

Features

Large wrap-around polycarbonate windows to maximise 360 degree vision.

Large lifting skylight in saloon with uplighting.

High spec carbon rig to minimise weight aloft

Good Bridgedeck clearance to minimise slamming when sailing to windward

Modular construction interior cabins, all en-suite, with Alucore lightweight furnishings.

Appendages

Spade rudders, hydraulically powered

Lifting centreboards, hydraulically activated

Large Storage

Capacity Lazarette storage in starboard bow for spinnaker and fenders.

Lazarette storage in port bow for smaller items (accessed from Mariner Cabin).

Front beam storage lockers for spinnaker, warps and fenders.

Rear beam storage lockers for liferafts, grab bags,

Engine room fire extinguisher controls.

Technical Area in engines rooms for generators, air conditioning equipment, watermakers (not fitted), dive compressor (not fitted), spares and tools.

Coffin locker storage in transoms for cleaning equipment, ropes, passarelle.

Accommodation :

Port Hull :

Owners Master Cabin:

Double Island bed, bedside cabinets x 2, Wardrobes x 2, laptop workstations x 2.

En-suite bathroom with :

shower ensuite, Geberit Balena 8000 electronic WC/bidet in its own enclosure, feature glass hand-wash basin with waterfall tap, dressing table and cosmetics area.

Flexible LED reading lights with USB phone charging points.

Rako remote control programmable feature lighting.

Mave air conditioning controls.

Main Downstairs Galley:

Double sink with work surface and drainage area.

Gaggenau Induction hob and extractor.

NEF Microwave and NEF Fan Oven/Grill.

Miele clothes washing machine, Miele clothes drier, retractable ironing board.

Front opening Isotherm fridge x 2

Front opening Isotherm freezer x 2.

Air extractor.

Crew Cabin:

Twin bunk beds, wardrobe, en-suite bathroom with hand-wash basin, shower, 240v fresh water flush Saniflow Macerator toilet.

Access hatch to port bow lazarette.

Flexible LED reading lights. Rako remote control lighting.

Starboard Hull :

Guest Cabin #1:

Double bed, bedside cabinet, wardrobe, laptop workstation.

En-suite bathroom with shower enclosure, 240v fresh water flush Saniflow Macerator toilet, handwash basin with waterfall tap.

Flexible LED reading lights. Rako remote control programmable feature lighting.

Mave air conditioning controls.

Guest Cabin #2:

Twin beds, bedside cabinet, wardrobe, laptop workstation.

En-suite bathroom with shower enclosure, 240v fresh water flush Saniflow Macerator toilet, handwash basin with waterfall tap.

Flexible LED reading lights. Rako remote control programmable feature lighting.

Mave air conditioning controls.

NB / The twin beds can be converted into a double with minor work from a shipyard.

Captain Cabin:

Double bed, Wardrobe, laptop workstation.

Additional storage for safety equipment and additional bed linen.

En-suite bathroom with shower enclosure, 240v fresh water flush Saniflow Macerator toilet, hand-wash basin with waterfall tap.

Flexible LED reading lights. Rako remote control programmable feature lighting.

Bridge deck :

Upstairs Galley:

Sink with work surface, Miele dishwasher, Isotherm fridge, wine chiller cabinet, rubbish compactor.

Saloon with Navigation area:

Seating area and dining table, many storage cupboards and drawers,

Concealed TV cupboard, 43 inch Samsung smart TV,

JVC music system, Philips Hue smart feature lighting,

electronic raising skylight roof for extra ventilation,

Mave air conditioning controls.

Large open floor space for additional easy seating or similar.

Exterior arrangement :

Cockpit:

Large seating area and dining table,

Philips Hue smart feature lighting, stereo music speakers,

side vents for additional air flow,

rear awning that can be removed in sections, depending on temperature and wind direction.

Lifting hatch over Flybridge access stairs makes the Cockpit area almost completely weather proof.

Flybridge:

Large seating area with weather covers when not in use,

folding teak dining table with high or low level option.

Stereo music speakers.

Navigation area with sail controls and winches separate from the seating.

Tenderlift and dinghy :

Carib 4m Inflatable GRP tender + 50hp 4 stroke Honda outboard.

Honda outboard service spares including spare propeller.

Hydraulic Tender Lift mechanism with handheld RF controller for single person launching.

Tanks and plumbing :

Fresh Water 2 x 1070 litres

Diesel 2 x 1800 litres (approx 2500 Nm range)

Grey Water 2 x 940 litres

Black Water 2 x 380 litres

Vega Industrial Grade digital level gauges

XALIS 9400V1 JM Concept Programmable Tank Level Indicators at Navigation Station.

Independent pressurised fresh water system per hull, with option to connect together.

Connections available for installing water makers in each hull, not currently in use.

Motorised valves are used to select which waste tank is to be emptied.

Macerator pumps in each hull to pump out waste.

Dockside waste water pump-out option.

Breather pipes for each tank with carbon granule filters.

Pumps to transfer diesel between tanks.

Propulsion :

Engines :

2 x 175 hp/129kw 3.7 litre Volvo Penta D4 Turbo Diesel each fitted with additional Mastervolt 150 amp Service Alternator.

All electronic controls including throttle.

Custom Halyard GRP silencers. Installed 2020.

Gearbox :

Electronic shift, Hydraulic clutch. Installed 2020.

Drivetrain 45mm diameter propeller shafts,

Gori 26 x 21 3-blade folding propellers

Rope cutters and overdrive.

LH port propeller and RH starboard propeller for sideways “walking” during manoeuvring.

Bow Thruster :

Retracting 9.6kw Lewmar 250 VRTTC 48v

Bow thruster situated in starboard bow, closed with flush-fitting GRP panel when not in use. Powered by 4 x 12v Optima Red Top 50AH AGM Batteries

Supplied from Mastervolt Chargemaster 24/60-3 Auto Battery Charger.

Hydraulic Power :

Hydraulic power pack in front beam with 4 x 6kw 24v electric motors

Powered by 4 x Northstar NSB-AGM31 103 Ah batteries

Supplied from Mastervolt Chargemaster 24/60-3 Auto Battery Charger

Electrical Panel with plc control to Eaton Vickers industrial solenoid valves.

Rig and Sail Plan :

Mast :

33m Lorima Grand Prix Carbon Mast,

0.9 tonnes including Hydraulic Winches Harken Switch Track system

2 :1 Mainsail Halyard with Harken pulley

2:1 Spinnaker Halyard with Harken pulley

Dedicated Man-halyard

Lopo Mast Navigation lights including 4 x overhead obstruction lights

Custom LED spotlights in halo formation, with Rako remote control

Carbon Radar bracket with led deck spotlight and loud speaker for Tannoy and horn

Mast Head wind instruments,

Lightning conductor.

Boom :

10m Lorima Carbon V-Boom
Telescopic Vang support.

Front Beam and Compression Tube :

All Carbon construction, with Carbon Seagull Striker.

Standing Rigging :

Carbo-Link Terminations
Rigid Carbon rod forestays x 2 and shrouds x 4.

Running Rigging :

Dyneema halyards and sheets.
Dyneema reefing lines.
Dyneema soft shackles and Dyneema lashings where needed.

Sails Incidence :

Mainsail with collapsing headboard and Carbon Battens 191 sqm
Hydraulic Furling Genoa 121 sqm
Hydraulic Furling Staysail 64 sqm
Storm Jib 14 sqm
Asymmetric spinnaker on continuous line furler 350 sqm
Symmetrical Parasail spinnaker with snuffer 398 sqm

Decks and Hardware :

Deck :

Details Permasteek synthetic decking
Rutgerson flush-fitting hatches to accommodation
Custom flush-fitting hatches to storage in front and rear beams
4 x Transom mounted shore power sockets
Lopo navigation lights.

Mooring :

Lewmar Delta 63 kg stainless-steel anchor with stainless-steel chain
2.5kw 24v Lewmar V8 electric windlass
Fortress folding anchor approx. 25kg with substantial length of shoreline on a drum.

Rope Handling :

Harken 990 3-speed hydraulic winch x 3
Harken 980-C 2-speed hydraulic winch x 1
Harken 2 speed power ratio 70 hydraulic winch x 1
Harken Genoa track Harken stand-up pulleys x 5 for headsail handling
Harken corner-turning deck mounted pulleys x 2 for headsail handling
Spinlock and Antal jammers
Hydraulic mainsail sheet and traveller, concealed in flybridge coamings.

Comfort :

Flybridge seating with reticulating foam and UV protective covers
Flybridge folding table with high and low levels
Transom bathing ladders and shower fittings.

Electrical System :

Service Batteries :

12 x Lifeline AGM GPL-8D 12v -255 Ah 900kg total, situated mid-ships in cockpit seating lockers.

Inverters :

8 x 5kw 240v Xtender XTH-5000-24.

Service Alternators :

2 x 150 amp

Mastervolt Alpha service alternators fitted to main Volvo Penta engines.

Controlled using Alpha Pro regulators.

Shore power Battery Chargers :

4 x Mastervolt Chagemaster 24/100-3

Electrical Monitoring :

Mastervolt Masterbus Network monitoring and control from navigation area Microsoft Laptop. Monitor currents and voltages using network of 10 shunts. Allows you to regulate settings such as the in-coming current from shore power battery chargers, to prevent overloading shore power.

Generators :

2 x 6.8kw Fischer Panda PMS AGT8000 24v-210amp Kubota Diesel engines

Remote Control Panel 6-50 7.

Philosophy :

System configured to allow power input simultaneously from shore power and generators, and main engine service alternators as required.

All 240v systems on the boat are powered from on-board inverters, to ensure clean supply and to prevent issues due to temperamental shore power.

Navigation System :

Flybridge Navigation Station :

Steering Wheel

Volvo Penta ignition switches, throttles and engines status display

Lewmar bow thruster control panel

VHF loudspeaker

Hydraulic Controls for Headsail furlers, Mainsheet, Traveller and for lowering Centreboards

B+G Zeus 2 Plotter Position for Tablet or Phone with USB power supply socket

B+G Graphic Display x 2.

Interior Navigation Station :

Volvo Penta Ignition switches, throttles and engines status display

B+G Graphic Display

B+G H5000 Pilot Controller and CPU

B+G Bluetooth WR10 Autopilot Remote Controller on lanyard

B+G Through-deck sensors and GPS sensor

B+G V90 VHF Radio with 3 x handsets and 2 x H50 wireless handset chargers

VHF loudspeaker

Simrad 4G Digital Radar system

NAIS-400 Class B AIS Transceiver

NSPL-500 VHF/AIS Splitter

Hand-held back-up VHF radio and charging station

2 x Masterbus network monitoring and control panels

Microsoft Laptop, main use being to monitor batteries and charging systems

Switch panel for emptying waste water tanks and fuel transfer between hulls.

Selector switch for navigation lights

Multi-USB charging socket

Remote displays for fuel and water tanks (fresh, grey and black)

Domestic Systems :

Air Conditioning :

Mave 15kw Air Conditioning Compressor
Eberspacher D10W 9.5kw diesel powered air heater
8 x fan coil air-transfer units
4 d digital thermostat with fan controller

Lighting :

Rako remote RF control programmable cabin lighting
Philips Hue Smart lighting system in saloon and cockpit with led strip and led spotlights.
Select any colour and create any mood lighting on the smartphone app.

Air Ventilation :

Fresh air flow vents in navigation area
Dometic black-out blinds with insect mesh on cabin overhead hatches.

Toilets :

Fresh water flushing macerator toilets in every cabin.
Master cabin WC also has a bidet function.

Entertainment :

43 inch saloon Samsung Smart TV in concealed TV cabinet activated with RF remote control
Music Stereo with speakers in cockpit and flybridge, can be linked to smartphone.

Comfort and cold :

Drinks fridge and sink in rear beam locker
Wine chiller cabinet in saloon.
Isotherm fridge in upstairs galley
2 x Isotherm fridges and 2 x Isotherm freezers in downstairs galley

Safety Equipment :

Liferafts :

2 x Plastimo Transocean >24hr
8 person Pack-C liferafts, last tested August 2017

Grab Bags :

A+B Thermal protective suits, inflatable radar reflectors,
Ocean Safety Cat-C first aid kit drogue

Life Jackets :

2 x child life jacket
11 x safety harness
11 x life jackets
2 x circular lifebuoys

Flare Box :

2 x Orange floating smoke,
4 x hand held red, whistle, signal mirror,
4 x red meteor parachute flare with gun

EPIRB/SART : 1 x SART transponder

Fire Equipment :

Fire extinguishers in all cabins
Fire blanket in galley
CO2 system and smoke alarms built into engine rooms

First Aid :

Several first aid kits, including large trans-ocean kit which needs updating

First Aid Manual Emergency Hatches In case of inversion, each hull has emergency hatches fore and aft, situated in the area of the access stairs.

Additionally there are pre-cut emergency hatch covers, in case a hull window ruptures during a passage.

Spare Parts :

Substantial collection of tools and spare parts including:

Engine service spares

Generator Spares

Tender outboard spares, including spare propeller

Bilge Pumps

Macerator Pumps

Fresh water pumps Interior

Lighting system Fuses and breakers Nav system senders

Rutgerson flush-fitting hatches (complete set)

Oils and coolants Colour-matched Gelcoat Spare vinyl wrap (exterior and interior)

Large variety of Hand tools Spanners and socket set

Power tools (polisher, grinder, drill)

Multimeter, clamp-on meter

Other informations :

Engines hours < 100 h

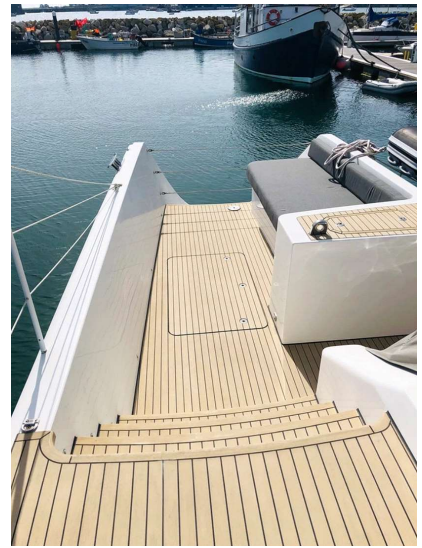
Generators hours : approx 5000 h each

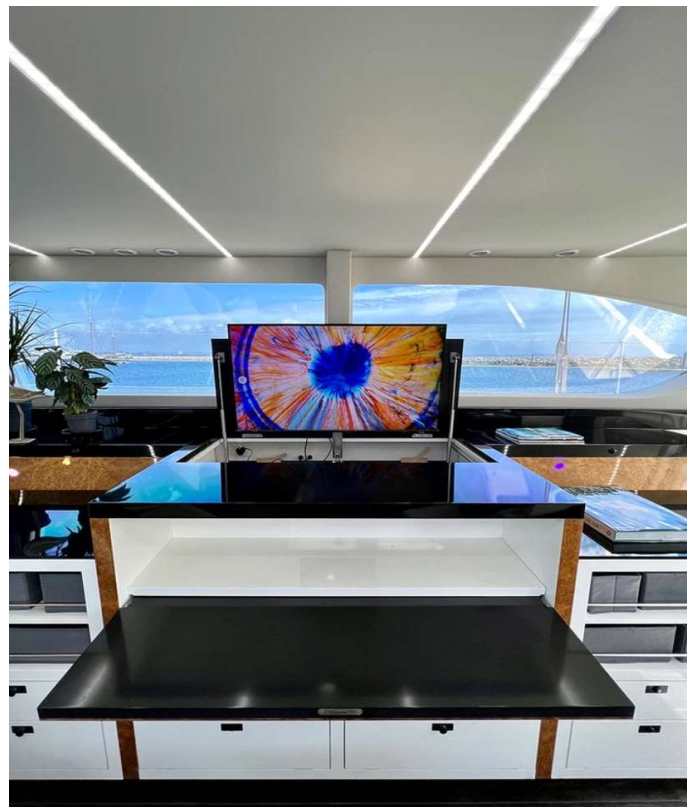
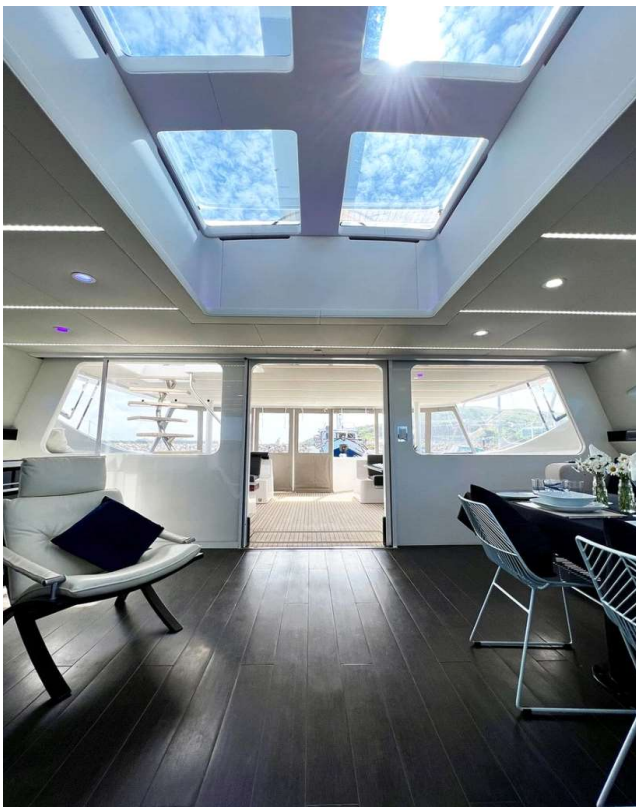
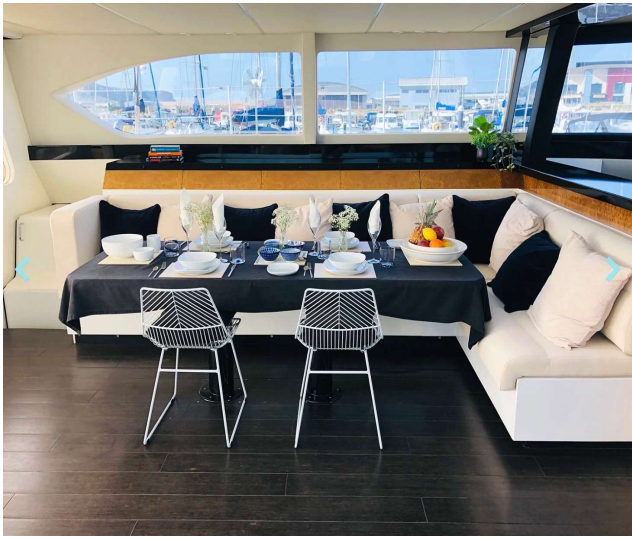
Water maker hours : 0

© the designworks 2022

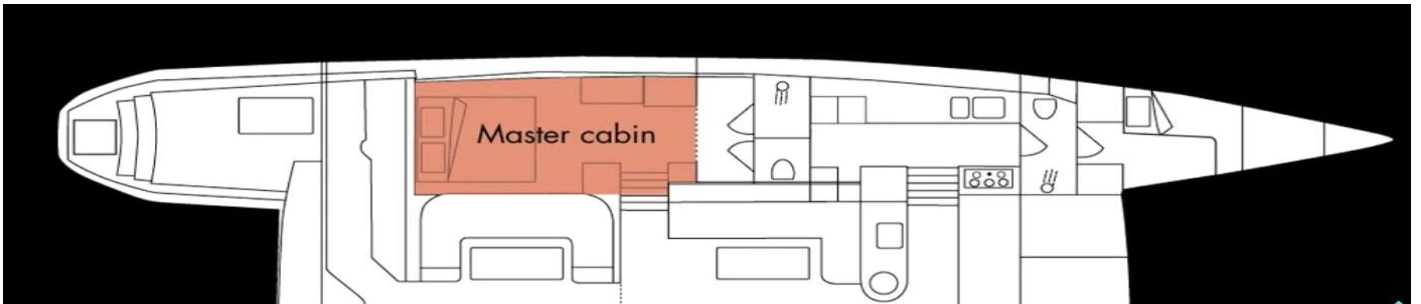
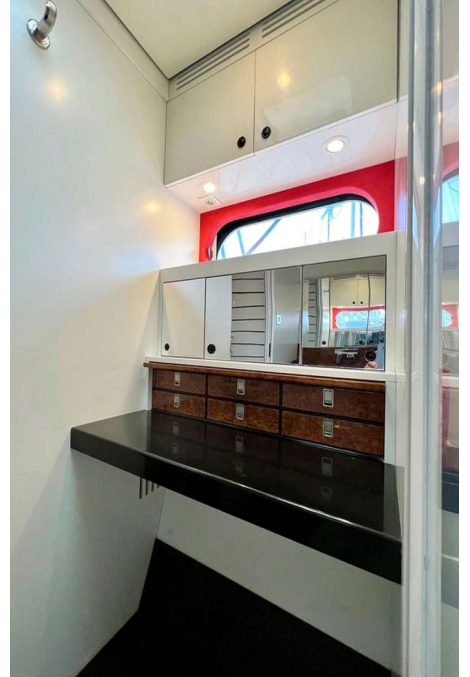
MAHAL KO

Exclusive 76 Catamaran

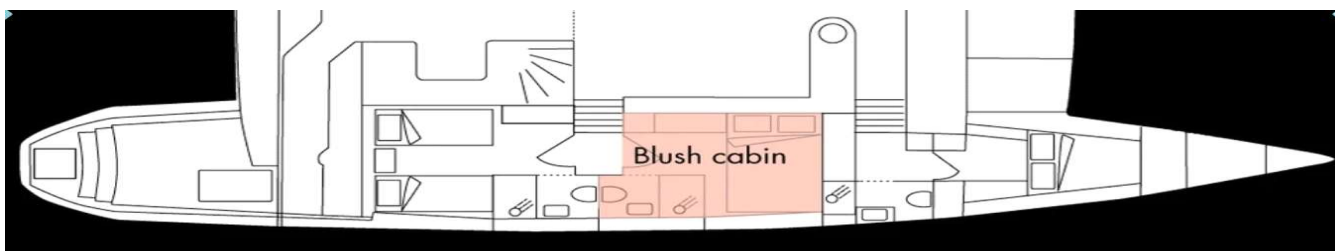




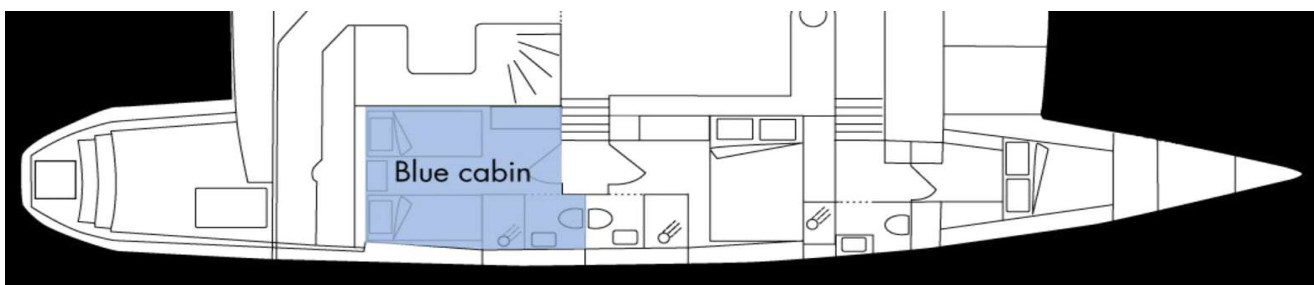
THE MASTER CABIN



THE GUEST CABIN Nr 1



THE GUEST CABIN Nr 2



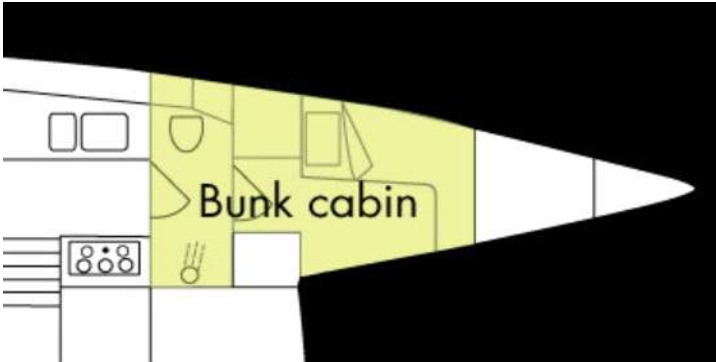
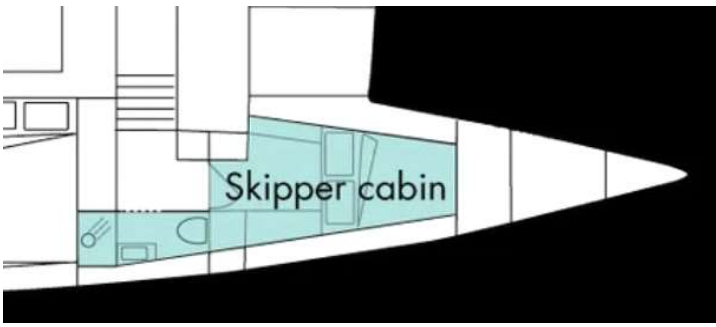
THE GALLEY (down on port forward)





THE CAPTAIN CABIN and CREW BUNK





SOME DETAILS ...

